



# **N4U**

## **REGISTRATION**

### **PROCEDURE**

#### **(version 2.0)**

*neuGRID4you has received funding from the European Commission's  
Seventh Framework Programme (FP7/2007-2013)  
under grant agreement n°283562*



# HOW TO CREATE YOUR PERSONAL ACCOUNT

This Guide is intended to provide you with thorough instructions to create your personal Account, which is essential to access the available tools on the website.

Here following a succinct explanation of the registration procedure.

**Basic Account**: limited access to neuGRID tools.

Just click on “Science Gateway” and follow the procedure!

**Premium Account**: full access to all N4U applications, news and support pages.

## 1. Request a grid certificate from your national authority

- EUGridPMA (<https://www.eugridpma.org/>) covering Europe, Africa and the Middle East;
- APGridPMA (<http://www.apgridpma.org/>), responsible for Asia and Pacific;
- TAGPMA (<http://www.tagpma.org/>), covering North America, Caribbean and Latin America.

## 2. IMPORT the certificate in the web browser (Firefox):

MAC

- open a webpage
- click on “Firefox > Preferences” in the Menu web bar
- go to the “Advanced” section in the pop-up Preferences window
- select “Encryption > View Certificate”. The Certificate Manager window will appear: select “Your Certificates”, click “Import” and browse for your personal certificate (see fig. 1).

WINDOWS

- open a webpage
- select Options
- go to the “Advanced” section and select “View Certificate”
- The Certificate Manager window will appear: select “Your Certificates”, click Import and browse for your personal certificate, (see fig. 1).

## 3. Upload the certificate into your N4U account

- Log in
- On the top right of the Science Gateway select **Go to**, and Control Panel
- Select User Certificate Management. Then follow the guided procedure.

**For further details about the registration procedure, please go to the next page.**

## Basic account

The following procedure will allow you to create a Basic Account. This will give you access to a set of very limited tools: you will be able to follow Science Gateway-related news, access the Knowledge base, and use some applications, but you won't have access to any image analysis application. The only tools available through the Basic Account are: Analysis Base, Monitor and Visualization tools (Jobs Browser, Brain Browser, and ONLY PARTIALLY Desktop Fusion), Infrastructure usability (EGI Accounting, EGI Gstat), all external tools, and the 3 applications AdaBoost, Freesurfer, SPM.

The following steps are needed to create your personal Account.

- Click on “Science Gateway” on the Home page of N4U website (<http://neugrid4you.eu/web/science-gateway>).
- Choose your Identity provider, click on register in the next page and fill the form that will appear.
- A confirmation email will be sent to the email address you indicated. You will also receive a second email with your verification code. This verification code will be required at your first login in the portal.
- Now you can try to log in with your e-mail address and password.
- Read and agree with the Terms of use.
- In the new page, you should select from "Available Sites" the communities you want to request authorization for future access: neugrid4you.eu (it will allow you to access/modify the official N4U information website) and/or Science Gateway (it will allow you to access the N4U Science Gateway and Cloud infrastructure). Please note that authorization requests may take a few days to be processed.
- Choose a Gateway
- You are now logged in!
- Once your request will be approved, you will be able to access the Science Gateway.

This registration will finally create a Basic Account that gives access to a limited set of tools. In order to access all N4U tools, you need to upgrade to a Premium Account.

## Premium Account

Premium Account allows users to access all N4U applications, as well as news and support pages. To get a full-featured account, you need to create your personal account following the same procedure of Basic Account creation and then to proceed with these steps: you need to get a grid certificate, request your inclusion in the neuGRID Virtual Organization, and upload your certificate into Control Panel>>My Account.

### - Certificate request

Users need to get a certificate recognised by the International Grid Trust Federation\* (IGTF), which is the body establishing common policies and guidelines among its Policy Management Authorities\* (PMAs). IGTF has three PMAs members. According to their location, users should refer to one of these PMAs websites, where they will be able to find their national or regional certificate issuing authority:

- APGridPMA (<http://www.apgridpma.org/>), responsible for Asia and Pacific;
- EUGridPMA (<https://www.eugridpma.org/>) covering Europe, Africa and the Middle East;
- TAGPMA (<http://www.tagpma.org/>), covering North America, Caribbean and Latin America.

Please be aware that each certificate authority has different issuing policies and requirements.

## - Upload the certificate in the web browser

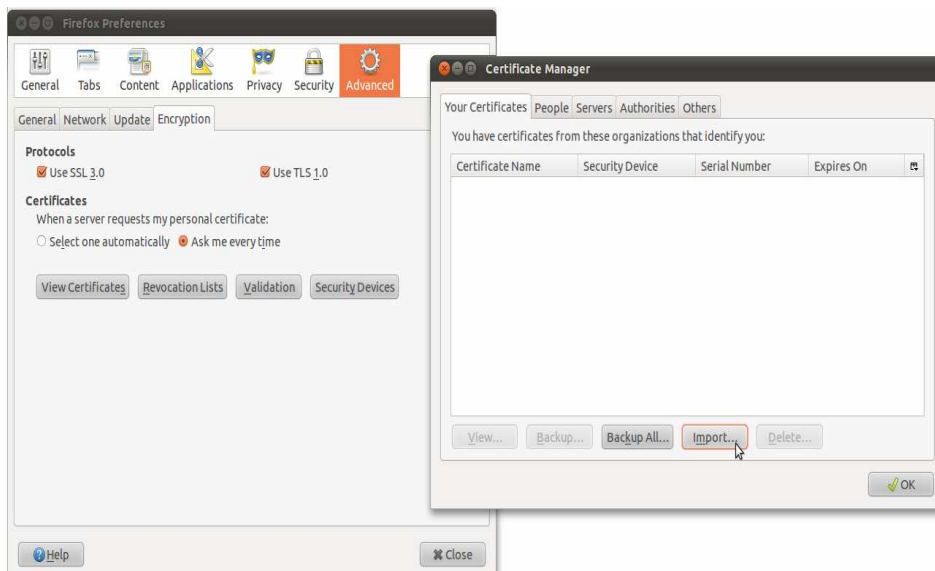
After getting your personal Grid Certificate, you should import it into the web browser (Firefox recommended).

### MAC

- open a webpage
- click on “Firefox > Preferences” in the Menu web bar
- go to the “Advanced” section in the pop-up Preferences window
- select “Encryption > View Certificate”. The Certificate Manager window will appear: select “Your Certificates”, click “Import” and browse for your personal certificate (see fig. 1).

### WINDOWS

- open a webpage
- select Options
- go to the “Advanced” section and select View Certificate”
- The Certificate Manager window will appear: select “Your Certificates”, click Import and browse for your personal certificate, (see fig. 1).



*Fig.1 Certificate manager window in Firefox.*

## - Upload the certificate in N4U website

You now need to upload your personal certificate to MyProxy\* (Control Panel).

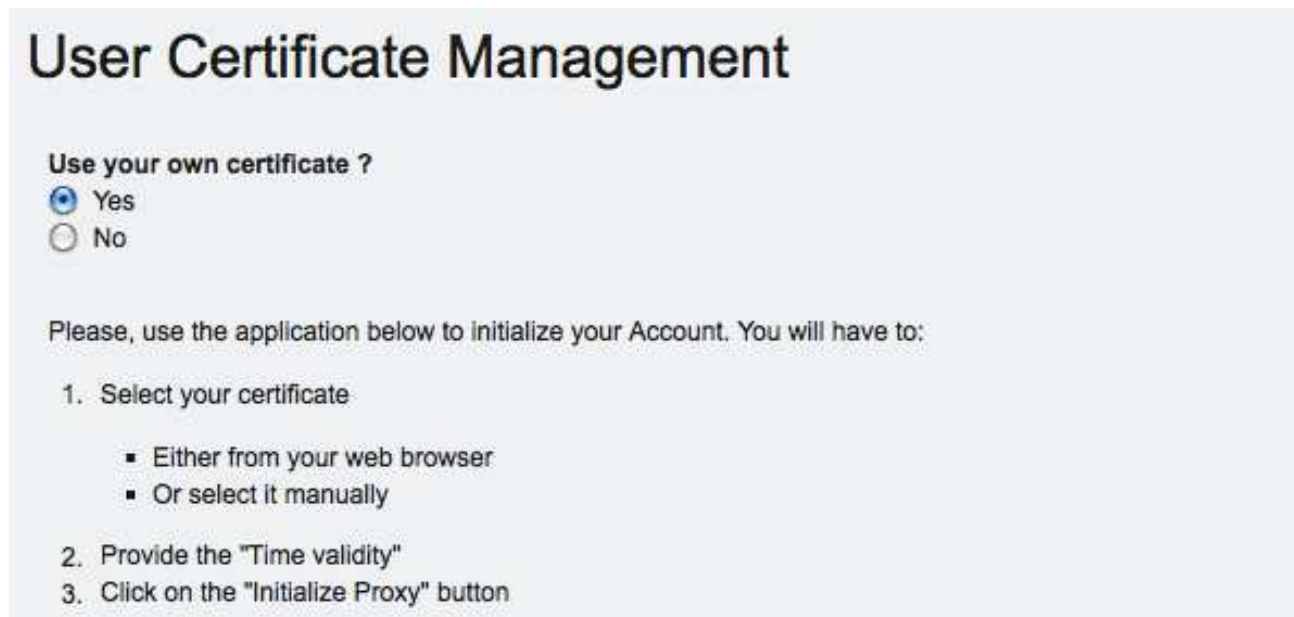
On the top right of the Science Gateway select Go to, and Control Panel>User Certificate Management (see fig. 2).



*Fig.2 Control Panel Menu.*

You will see a java applet allowing you to select and upload your certificate, as well as setting a proxy time validity . Do not forget to change the default validity time (10 days) to the maximum allowed validity time (365 days)

Follow the wizard to conclude the procedure (see fig. 3):



**Fig.3 User Certificate Upload steps followed by a Java Applet.**

During the process, you will be asked for certificate passphrase (see fig. 4).



**Fig.4 Certificate Passphrase.**

Once you conclude the whole procedure, a message will inform you about the successful upload of your certificate (see fig. 5).



**Fig.5 Upload Success.**

## TROUBLESHOOTING

Should you have any issue using the N4U infrastructure, please visit the N4U Help Desk (<https://project-mgt.maatg.fr/projects/neugrid4you>). Accessing the Help Desk requires a separate account. You can easily create one by clicking on Register on the Home page of the above link. You can report bugs, problems you are experiencing and ask the N4U user community for help. We also recommend you to have a look at the N4U Knowledge Base, the actual online User Guide to N4U.